

*New Styles
Available!*



safestep[™]
PREVENTION PAYS

— An OHI Company —

**FOOTWEAR
COLLECTION**

MAKING EVERY STEP COUNT

SafeStep is dedicated to serving individuals, families and their foot care providers by offering the highest quality shoes and inserts to help foster a healthier and more active lifestyle.

For people with diabetes, SafeStep offers the most comprehensive selection of comfortable, extra depth, reimbursable footwear available, in styles that range from dress to casual to athletic.

WOMEN'S

Walking	2
Sport	3
Casual	7
Dress	10
Boots	11
Stretch	12

MEN'S

Walking	16
Sport	18
Casual	22
Dress	24
Boots	26

Unisex Stretch 14

SafeStep offers every shoe from Apex and OrthoFeet.
Visit [SafeStep.net](https://www.safestep.net) for a complete style listing.



Shoe Fitting Guide

Women's Shoe Widths

4A	2A	B	D	2E	4E
X-Narrow	Narrow	Medium	Wide	X-Wide	XX-Wide

Men's Shoe Widths

2A	B	D	2E	5E	6E
X-Narrow	Narrow	Medium	Wide	X-Wide	XX-Wide

Don't ask for a size. Ask to be fitted.

Shoe Features

- Light Weight
- Balance Improvement
- AFO Compatible
- Extra Roomy
- Removable Spacers
- Slip Resistant
- Narrow Available
- Adjustable Heel
- Water Resistant
- Washable
- Apex Conform Foam

WOMEN'S FOOTWEAR

Lace Walker v854W



Color: White/Periwinkle
 Sizes: 4.5-11,12,13
 Widths: M, W, XW
 Depth: 5/16"

Double Strap Walker v952W



Color: White
 Sizes: 4.5-11,12,13
 Widths: M, W, XW
 Depth: 5/16"

Lace Walker x801W



Color: Black
 Sizes: 4.5-11,12,13
 Widths: M, W, XW
 Depth: 5/16"

Hook & Loop Leather WW928HW3



Color: White
 Sizes: 5-11, 12, 13
 Widths: B, D, 2E, 4E
 Depth: 3/16"

Addiction Walker 2 120307-142



Color: White
 Sizes: 5-12
 Widths: 2A, B, D, 2E
 Depth: 12mm

Coral 986



Color: Turquoise
 Sizes: 5-11
 Widths: M, W, XW
 Depth: 3/8"



JEBA™

COMPRESSION HOSIERY

Visit safestep.net
to view our full
line of Jebe
Compression
Hosiery & Socks



Addiction Walker 2

120307-072



BROOKS

Color: Black
Sizes: 5-12
Widths: 2A, B, D, 2E
Depth: 12mm

Coral 987



OrthoFeet

Color: Grey
Sizes: 5-11
Widths: M, W, XW
Depth: 3/8"

Boss Runner X525W



NEW!



APEX

Color: Sea Foam/Purple
Sizes: 5-11, 12, 13
Widths: M, X, XW
Depth: 5/16"

Coral 981



OrthoFeet

Color: Black
Sizes: 5-11
Widths: M, W, XW
Depth: 3/8"

Boss Runner X529W



NEW!



APEX

Color: Sea Foam/Silver
Sizes: 5-11, 12, 13
Widths: M, X, XW
Depth: 5/16"

WOMENS WALKING

WOMENS SPORT

WOMENS SPORT

WOMEN'S FOOTWEAR

WOMENS SPORT

Lace Runner W840BM5



Color: Black
 Sizes: 5-12, 13
 Widths: B, D, 2E
 Depth: 3/16"

Breeze Athletic Knit A7000W



Color: Grey
 Sizes: 5-11, 12
 Widths: M, W, XW
 Depth: 5/16"

WOMENS SPORT

WOMENS SPORT

Breeze Athletic Knit A7100W



Color: Navy
 Sizes: 5-11, 12
 Widths: M, W, XW
 Depth: 5/16"

Talya 741



Color: Black
 Sizes: 5-12
 Widths: M, W, XW
 Depth: 7/16"

OrthoFeet

WOMENS SPORT

WOMENS SPORT

Talya 742



Color: White
 Sizes: 5-12
 Widths: M, W, XW
 Depth: 7/16"

OrthoFeet

Talya 743



Color: Lavender
 Sizes: 5-12
 Widths: M, W, XW
 Depth: 7/16"

OrthoFeet

WOMENS SPORT



Francis 846



OrthoFeet

Color: Rose
 Sizes: 5-12
 Widths: M, X, XW
 Depth: 7/16"

Francis 844



OrthoFeet

Color: Grey
 Sizes: 5-12
 Widths: M, W, XW
 Depth: 7/16"

Moravia 947



OrthoFeet

Color: Khaki
 Sizes: 5-12
 Widths: M, W, XW
 Depth: 7/16"

Sierra Trail Runner V753W



APEX

Color: Grey/Purple
 Sizes: 4.5-11, 12, 13
 Widths: M, W, XW
 Depth: 5/16"

Boss Runner X521W



APEX

Color: Periwinkle
 Sizes: 4.5-11, 12, 13
 Widths: M, W, XW
 Depth: 5/16"

Reina Runner X532W



APEX

Color: Periwinkle
 Sizes: 5-11, 12, 13
 Widths: M, W, XW
 Depth: 5/16"

* Patented Lockdown™
 Heel Strap Design



WOMENS SPORT

WOMENS SPORT

WOMENS SPORT

WOMEN'S FOOTWEAR

Boss Runner X527W



Color: Silver/Sea Blue
 Sizes: 4.5-11, 12, 13
 Widths: M, W, XW
 Depth: 5/16"

Performance Athletic P9200W



Color: Sea Foam/Pink
 Sizes: 6-11, 12, 13
 Widths: M, X, XW
 Depth: 5/16"

Performance Athletic P7000W



Color: Black
 Sizes: 6-11, 12
 Widths: M, W, XW
 Depth: 5/16"

Performance Athletic P7200W



Color: White
 Sizes: 6-11, 12
 Widths: M, W, XW
 Depth: 5/16"

Performance Athletic P7100W



Color: Mint/Grey
 Sizes: 6-11, 12
 Widths: M, W, XW
 Depth: 5/16"

Performance Athletic P7300W



Color: Blue
 Sizes: 6-11, 12
 Widths: M, W, XW
 Depth: 5/16"



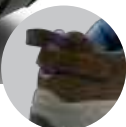
Balance Shoe-Hiker

A3260W



Color: Brown
 Sizes: 5-11, 12
 Widths: M, W, XW
 Depth: 5/16"

* Patented Lockdown™
 Heel Strap Design



Naples 875



OrthoFeet



Color: Blue
 Sizes: 5-12
 Widths: M, W, XW
 Depth: 3/8"

Sanibel 893



OrthoFeet



Color: Black
 Sizes: 5-12
 Widths: M, W, XW
 Depth: 3/8"

Verona 997



OrthoFeet



Color: Pewter
 Sizes: 5-12
 Widths: M, W, XW
 Depth: 3/8"

Verona 991



OrthoFeet



Color: Black
 Sizes: 5-12
 Widths: M, W, XW
 Depth: 3/8"

Chattanooga 851



OrthoFeet



Color: Black
 Sizes: 5-12
 Widths: M, W, XW
 Depth: 5/16"

WOMENS CASUAL

WOMENS CASUAL

WOMENS CASUAL

WOMEN'S FOOTWEAR

WOMEN'S CASUAL

Milano 890

NEW!



OrthoFeet



Color: Brown
 Sizes: 5-12
 Widths: M, W, XW
 Depth: 7/16"



Mesh Mary Jane A600W



Color: Black
 Sizes: 6-11, 12, 13
 Widths: M, W, XW
 Depth: 5/16"

WOMEN'S CASUAL

WOMEN'S CASUAL

Boat Shoe A2210W



Color: Grey
 Sizes: 5-11, 12, 13
 Widths: M, W, XW
 Depth: 5/16"



Mesh Mary Jane A601W



Color: Grey
 Sizes: 6-11, 12, 13
 Widths: M, W, XW
 Depth: 5/16"

WOMEN'S CASUAL

WOMEN'S CASUAL

Sydney A2200W



Color: Camel
 Sizes: 5-11, 12, 13
 Widths: M, W, XW
 Depth: 5/16"



Double Strap Conform 1260W



Color: Black
 Sizes: 4.5-11, 12, 13
 Widths: M, W, XW
 Depth: 1/2"

WOMEN'S CASUAL



Apex
A-wave

A-Wave Prefabricated Orthotics

Experience a gentle wave of comfort, enhanced stability and relief from pain with A-Wave: Flex, Firm and XFirm

View at Safestep.net



NEW!



Boat Shoe A2220W



Color: Grey
Sizes: 5-11, 12, 13
Widths: M, W, XW
Depth: 5/16"

Liv A400W



Color: Black
Sizes: 5-11, 12, 13
Widths: M, W, XW
Depth: 5/16"

Classic Oxford Lace 1270W



Color: Black
Sizes: 4.5-11, 12, 13
Widths: M, W, XW
Depth: 1/2"

Ellen A404W



Color: Tan
Sizes: 5-11, 12, 13
Widths: M, W, XW
Depth: 5/16"

Ellen A403W



Color: White
Sizes: 5-11, 12, 13
Widths: M, W, XW
Depth: 5/16"

WOMENS CASUAL

WOMENS CASUAL

WOMENS CASUAL

WOMEN'S FOOTWEAR

WOMEN'S CASUAL

Linda A832W



Color: Taupe
 Sizes: 5-11,12,13
 Widths: M, W, XW
 Depth: 5/16"

WOMEN'S CASUAL

Ellen A401W



Color: Navy
 Sizes: 5-11,12,13
 Widths: M, W, XW
 Depth: 5/16"

WOMEN'S CASUAL

Linda A830W



Color: Black
 Sizes: 5-11,12,13
 Widths: M, W, XW
 Depth: 5/16"

Regina A700W



Color: Black
 Sizes: 5-11,12,13
 Widths: M, W, XW
 Depth: 5/16"

**Biomechanical
 Single Strap B3000W**



Color: Black
 Sizes: 4.5-11,12,13
 Widths: M, W, XW
 Depth: 1/2"

Evelyn A205W



Color: Black Croc
 Sizes: 5-11,12,13
 Widths: M, W, XW
 Depth: 5/16"

WOMEN'S DRESS

WOMEN'S DRESS

WOMEN'S DRESS



Evelyn A200W



Color: Black
 Sizes: 5-11,12,13
 Widths: M, W, XW
 Depth: 5/16"

NEW!



Chelsea 817



Color: Black
 Sizes: 5-12
 Widths: N, M, W, XW
 Depth: 3/8"

Lisa Mary Jane A330W



Color: Black
 Sizes: 5-11,12,13
 Widths: M, W, XW
 Depth: 5/16"

Biomechanical Mary Jane B6000W



Color: Black
 Sizes: 4.5-11,12,13
 Widths: M, W, XW
 Depth: 1/2"

Janice A300W



Color: Black
 Sizes: 5-11,12,13
 Widths: M, W, XW
 Depth: 5/16"

Florence 867

NEW!



Color: Brown
 Sizes: 5-12
 Widths: M, W, XW
 Depth: 7/16"

WOMENS DRESS

WOMENS DRESS

WOMENS DRESS

WOMENS DRESS

WOMENS DRESS

WOMENS BOOT

WOMEN'S FOOTWEAR

WOMENS BOOT

Dakota 892



OrthoFeet

Color: Blue
 Sizes: 5-12
 Widths: M, W, XW
 Depth: 7/16"

Emmy A723W



APEX

Color: Tan
 Sizes: 5-11, 12, 13
 Widths: M, W, XW
 Depth: 5/16"

WOMENS STRETCH

WOMENS BOOT

Dakota 894



OrthoFeet

Color: Olive
 Sizes: 5-12
 Widths: M, W, XW
 Depth: 7/16"

Breeze Stretch Walker 835



OrthoFeet

Color: Black
 Sizes: 5-12
 Widths: M, W, XW
 Depth: 3/8"

WOMENS STRETCH

WOMENS BOOT

Milano 885



OrthoFeet

Color: Black
 Sizes: 5-12
 Widths: N, M, W, XW
 Depth: 3/8"

Wichita Spandex 825



OrthoFeet

Color: Black
 Sizes: 5-12
 Widths: M, W, XW, XXW
 Depth: 3/8"

WOMENS STRETCH



Miranda A350W



Color: Black
 Sizes: 5-11,12,13
 Widths: M, W, XW
 Depth: 5/16"

Emmy A720W



Color: Black
 Sizes: 5-11,12,13
 Widths: M, W, XW
 Depth: 5/16"

Donna A730W



Color: Black
 Sizes: 5-11,12,13
 Widths: M, W, XW
 Depth: 5/16"



SafeStep offers Custom Diabetic Inserts:

Bundle Shoes and CDIs using
 OHI1Scan Technology.

- Footwear and CDIs bundled and shipped together
- Fabricated to precisely fit your footwear
- Guaranteed to fit
- Modifications available
- Scans preferred (foam and plaster casts accepted)
- Medicare PDAC code verified

**Visit safestep.net to view our full
 line of products.**



UNISEX STYLES

Apex Balance Shoe (ABS) A3200



Color: Black
Depth: 5/16"

Sizes:
Women's: 5-11, 12

Men's: 7-13, 14, 15
Widths: M, W, XW

Stretchable Double Strap 1200



Color: Black
Depth: 1/2"

Sizes/Widths:

Women's:
Wide: 4.5-11, 12, 13
X-Wide: 6-14
XX-Wide: 7-14

Men's:
Med: 3.5-11, 12
Wide: 5-13, 14, 15, 16
X-Wide: 6-13, 14, 15, 16

Stretchable Single Strap 1201



*Not PDAC Verified
**Sold Individually
(Rt or Lt)



Color: Black
Depth: 1/2"

Sizes/Widths:

Women's:
Wide: 4.5/5-12.5/13
X-Wide: 5.5/6-13.5/14

Men's:
Med: 3.5/4-11.5/12
Wide: 4.5/5-14.5/15

Stretchable Triple Strap 1209



Color: Black
Depth: 1/2"

Sizes/Widths:

Women's:
Wide: 4.5/5-12.5/13
X-Wide: 5.5/6-13.5/14
XX-Wide: 5.5/6-14.5/15

Men's:
Med: 3.5/4-11.5/12
Wide: 4.5/5-15.5/16
X-Wide: 4.5/5-15.5/16

Stretchable T2000



Color: Black
Depth: 1/2"

Sizes/Widths:

Women's:
Wide: 4.5-12, 13
X-Wide: 6-14, 15, 16
XX-Wide: 7-14, 15, 16
XXX-Wide: 7-14, 15, 16

Men's:
Medium: 3.5-11, 12
Wide: 5-13, 14, 15, 16
X-Wide: 6-13, 14, 15, 16
XX-Wide: 6-13, 14, 15, 16

ARIZONA AFO

SafeStep offers the Full line of Arizona Gauntlet, Thermoplastic and Specialty AFOs, please visit our website for all styles and medicare coding and reimbursement info at safestep.net





THE ULTIMATE SOCKS:

Unmatched comfort,
health benefits, and
exceptional features

- Seamless design curbs ulceration
- Moisture-wicking promotes drier feet
- Ventilated airflow for temperature control
- Non-binding for improved circulation
- Copper yarn means antibacterial/antifungal/anti-odor and softer skin
- Heel and forefoot padding for ultimate comfort
- Light arch support helps relieve achiness
- Y-heel and toe construction for perfect fit

Heavenly Healthful Socks™ Irresistible Pricing!



Copper Cloud will help keep feet dry,
odor-free and feeling great. **Guaranteed!**

1. Non-binding welt
2. Moisture-wicking acrylic to keep feet cool and dry
3. Y-heel and toe construction for a perfect fit
4. Heel and forefoot padding
5. Multi-benefit, copper-infused yarn
6. Light arch support
7. Ventilated airflow
8. Seamless construction for maximum protection

X-Small
Men: 4-6
Women: 5-6

Small
Men: 6.5-8
Women: 7.5-9

Medium
Men: 8.5-10
Women: 9.5-11

Large
Men: 10.5-12
Women: 11.5-13

MEN'S FOOTWEAR

MENS WALKING

Lace Walker X801M



Color: Black
 Sizes: 6.5-13, 14, 15
 Widths: M, W, XW
 Depth: 5/16"

NEW!



Boss Runner X523M



Color: Silver/Blue
 Sizes: 6.5-13, 14
 Widths: M, X, XW
 Depth: 5/16"

MENS WALKING

MENS WALKING

Lace Walker X821M



Color: White
 Sizes: 6.5-13, 14, 15
 Widths: M, W, XW
 Depth: 5/16"



Athletic Lace Walker V854M



Color: White/Blue
 Sizes: 6.5-13, 14, 15
 Widths: M, W, XW
 Depth: 5/16"

MENS WALKING

MENS WALKING

Double Strap Walker V952M



Color: White
 Sizes: 6.5-13, 14, 15
 Widths: M, W, XW
 Depth: 5/16"



Triple Strap Walker X903M



Color: Black
 Sizes: 6.5-13, 14, 15
 Widths: M, W, XW
 Depth: 5/16"

MENS WALKING

Hook & Loop Leather MW928BK3



B
new balance

Color: Black
Sizes: 7-13, 14, 15, 16
Widths: B, D, 2E, 4E, 6E
Depth: 3/16"

Addiction Walker 2 110318-072



BROOKS.

Color: Black
Sizes: 7-13, 14, 15
Widths: B, D, 2E, 4E
Depth: 12mm

Athletic Strap Walker X920M



APEX

Color: Black
Sizes: 6.5-13, 14, 15
Widths: M, W, XW
Depth: 5/16"

Active Strap Walker G8010M



APEX

Color: Black
Sizes: 6.5-13, 14, 15
Widths: M, W, XW, XXW
Depth: 1/2"

Addiction Walker 2 110318-142



BROOKS.

Color: White
Sizes: 7-13, 14, 15
Widths: B, D, 2E, 4E
Depth: 12mm

Active Strap Walker G8210M



APEX

Color: White
Sizes: 6.5-13, 14, 15
Widths: M, W, XW, XXW
Depth: 1/2"

MEN'S FOOTWEAR

MENS WALKING

Active Lace Walker G7000M



Color: Black
 Sizes: 6.5-13, 14, 15, 16
 Widths: M, W, XW
 Depth: 1/2"

NEW!

Performance Athletic P9100M



Color: Grey
 Sizes: 6.5-13, 14
 Widths: M, X, XW
 Depth: 5/16"

MENS SPORT

Sprint Tie-less 672



Color: Grey
 Sizes: 7-12, 13, 14
 Widths: M, W, XW
 Depth: 3/8"

NEW!

Performance Athletic P9000M



Color: Black
 Sizes: 6.5-13, 14
 Widths: M, X, XW
 Depth: 5/16"

MENS SPORT

Performance Athletic Sneaker P7100M



Color: Brown
 Sizes: 7-13, 14
 Widths: M, W, XW
 Depth: 5/16"

NEW!

Performance Athletic Sneaker P7200M



Color: White
 Sizes: 7-13, 14
 Widths: M, X, XW
 Depth: 5/16"

MENS SPORT

MENS SPORT

MENS SPORT

Performance Athletic Sneaker P7000M



Color: Black
 Sizes: 7-13, 14
 Widths: M, W, XW
 Depth: 5/16"



Performance Athletic Sneaker P7300M

NEW!



Color: Blue
 Sizes: 7-13, 14
 Widths: M, W, XW
 Depth: 5/16"



Stealth Runner V551M



Color: Blue
 Sizes: 6.5-13, 14, 15
 Widths: M, W, XW
 Depth: 5/16"



Sorrento 643



Color: Black
 Sizes: 7-12, 13, 14
 Widths: M, W, XW
 Depth: 7/16"



Apex Copper Cloud Socks

The most feature-rich socks available made with antibacterial copper infused yarn to help your patients keep their feet cool, dry, comfortable and healthy. See the full selection on safestep.net



Boss Runner X521M



Color: Blue
 Sizes: 6.5-13, 14, 15
 Widths: M, W, XW
 Depth: 5/16"



MEN'S FOOTWEAR

Rhino Runner X532M*



Color: Blue
 Sizes: 6.5-13,14,15
 Widths: M, W, XW
 Depth: 5/16"

* Patented Lockdown™
 Heel Strap Design



Boss Runner X520M*



Color: Black
 Sizes: 6.5-13,14,15
 Widths: M, W, XW
 Depth: 5/16"

* Patented Lockdown™
 Heel Strap Design



Athletic Bungee A5000M



Color: Black
 Sizes: 7-13,14,15
 Widths: M, W, XW
 Depth: 5/16"

Tacoma 521



Color: Black
 Sizes: 7-12,13,14
 Widths: M, W, XW
 Depth: 3/8"

Bolt Athletic Knit A7000M



Color: Black
 Sizes: 7-13,14,15
 Widths: M, W, XW
 Depth: 5/16"

Athletic Bungee Strap A6000M



Color: Black
 Sizes: 7-13,14,15
 Widths: M, W, XW
 Depth: 5/16"



Sierra Trail Runner V753M



Color: Grey/Blue
 Sizes: 6.5-13,14,15
 Widths: M, W, XW
 Depth: 5/16"

Sierra Trail Runner V751M



Color: Brown
 Sizes: 6.5-13,14,15
 Widths: M, W, XW
 Depth: 5/16"

Sprint Tie-less 674



Color: Blue
 Sizes: 7-12,13,14
 Widths: M, W, XW
 Depth: 3/8"

Lace Runner M840LB5

SEASONAL*



Color: Grey
 Sizes: 7-12, 13, 14, 15
 Widths: D, 2E, 4E
 Depth: 3/16"

Tabor 20211



Color: Charcoal
 Sizes: 7 - 11.5, 12, 13, 14
 Widths: M, W, XW
 Depth: 7/16"

Tabor 20215



Color: Blue
 Sizes: 7 - 11.5, 12, 13, 14
 Widths: M, W, XW
 Depth: 7/16"

MEN'S FOOTWEAR

Shreveport 644



OrthoFeet



Color: Brown
 Sizes: 7-12,13,14
 Widths: M, W, XW
 Depth: 5/16"

Apex Boat Shoe LT810M



APEX



Color: Dark Brown
 Sizes: 7-13,14
 Widths: M, W, XW
 Depth: 3/8"

Leo 429

OrthoFeet



Color: Black
 Sizes: 7-12, 13, 14
 Widths: M, W, XW
 Depth: 7/16"

Apex Boat Shoe LT820M



APEX



Color: Light Brown
 Sizes: 7-13,14
 Widths: M, W, XW
 Depth: 3/8"

Leo 428

OrthoFeet



Color: Brown
 Sizes: 7-12, 13, 14
 Widths: M, W, XW
 Depth: 7/16"

Balance Shoe-Hiker A3260M



APEX



Color: Brown
 Sizes: 7-13,14,15
 Widths: M, W, XW
 Depth: 5/16"

* Patented Lockdown™
 Heel Strap Design





Highline 484



OrthoFeet



Color: Dark Brown
 Sizes: 7-12, 13, 14
 Widths: M, W, XW
 Depth: 7/16"

Avery Island 410



OrthoFeet



Color: Black
 Sizes: 7-12, 13, 14
 Widths: N, M, W, XW, XXW
 Depth: 3/8"

Ariya Moc Toe Y910M



APEX



Color: Brown
 Sizes: 6.5-13, 14, 15
 Widths: M, W, XW
 Depth: 5/16"

Biomechanical Classic Moc B5000M



APEX



Color: Black
 Sizes: 6.5-13, 14, 15, 16
 Widths: W, XW, XXW
 Depth: 1/2"

Fully functional
 vamp opening for
 easy foot insertion.



Ariya Moc Toe Y900M



APEX



Color: Black
 Sizes: 6.5-13, 14, 15
 Widths: M, W, XW
 Depth: 5/16"

Gramercy 465



OrthoFeet



Color: Black
 Sizes: 7-12, 13, 14
 Widths: M, W, XW
 Depth: 3/8"

MENS CASUAL

MENS CASUAL

MENS DRESS

MEN'S FOOTWEAR

Oxford Lace 1270M



Color: Black
 Sizes: 6.5-13,14,15,16
 Widths: M, W, XW
 Depth: 1/2"

Lexington Moc Toe Oxford LT910M



Color: Brown
 Sizes: 7-13,14
 Widths: M, W, XW
 Depth: 1/4"

Lexington Cap Toe LT610M



Color: Brown
 Sizes: 7-13,14
 Widths: M, W, XW
 Depth: 1/4"

Lexington Moc Toe Oxford LT900M



Color: Black
 Sizes: 7-13,14
 Widths: M, W, XW
 Depth: 1/4"

Lexington Cap Toe LT600M



Color: Black
 Sizes: 7-13,14
 Widths: M, W, XW
 Depth: 1/4"

Lexington Strap Loafer LT200M



Color: Black
 Sizes: 7-13,14
 Widths: M, W, XW
 Depth: 5/16"

Fully functional
 vamp opening for
 easy foot insertion.





Lexington Strap Loafer LT210M



Color: Brown
 Sizes: 7-13, 14
 Widths: M, W, XW
 Depth: 5/16"

Fully functional
 vamp opening for
 easy foot insertion.



Classic Oxford B3000M



Color: Black
 Sizes: 6.5-13, 14, 15, 16
 Widths: M, W, XW
 Depth: 1/2"

Classic Oxford B3100M



Color: Brown
 Sizes: 6.5-13, 14, 15, 16
 Widths: M, W, XW
 Depth: 1/2"

Gramercy 467



Color: Black
 Sizes: 7-12, 13, 14
 Widths: D, 2E, 4E, 6E
 Depth: 3/8"

Lincoln Center 585



Color: Black
 Sizes: 7-12, 13, 14
 Widths: M, W, XW
 Depth: 3/8"

Conform Double Strap 1260M



Color: Black
 Sizes: 6.5-13, 14, 15, 16
 Widths: M, W, XW, XXW
 Depth: 1/2"

MEN'S FOOTWEAR

MENS BOOT

Triple Strap Boot B4200M



Color: Black
 Sizes: 6.5-13,14,15,16
 Widths: M, W, XW
 Depth: 1/2"

Calgary S225-1



Color: Black
 Sizes: 7-13,14,15
 Widths: M, W, XW
 Depth: 1/2"

MENS BOOT

MENS BOOT

Ariya Hiking Boot A4100M



Color: Brown
 Sizes: 7-13,14,15
 Widths: M, W, XW
 Depth: 5/16"

Logan LT460M



Color: Brown
 Sizes: 7-13,14
 Widths: M, W, XW
 Depth: 1/4"

MENS BOOT

MENS BOOT

Ariya Hiking Boot A4000M



Color: Black
 Sizes: 7-13,14,15
 Widths: M, W, XW
 Depth: 5/16"

Highline 481



Color: Black
 Sizes: 7-12,13,14
 Widths: M, W, XW
 Depth: 3/8"

MENS BOOT

Hudson LT410M

Color: Brown
 Sizes: 7-13, 14
 Widths: M, W, XW
 Depth: 1/4"

Ridgewood 492

Color: Brown
 Sizes: 7-12, 13, 14
 Widths: M, X, XW
 Depth: TBD

Ridgewood 491

Color: Black
 Sizes: 7-12, 13, 14
 Widths: M, W, XW
 Depth: 7/16"

Lace Boot B4500M

Color: Black
 Sizes: 6.5-13, 14, 15, 16
 Widths: M, W, XW
 Depth: 1/2"



WHY FOOTWEAR MATTERS

Diabetic shoes are specifically designed for foot protection, pressure relief and support. These shoes feature extra depth to accommodate prescribed inserts to ensure that your feet are protected and comfortable throughout the day.

THE COST OF YOUR SHOES MAY BE COVERED BY MEDICARE

The 1993 Therapeutic Shoe Bill covers a pair of shoes and inserts every calendar year. Protective footwear can reduce complications of the foot and the number of diabetic amputations.

Coverage is limited to shoes and inserts meeting certain requirements for patients with specific clinical conditions.

Ask your healthcare professional for more information

DIABETES AND YOUR FEET

Diabetes can develop from a lack of insulin production or the inability of insulin to perform its normal everyday functions. People with diabetes can develop foot problems which can lead to very serious complications.

NEUROPATHY

60 - 70% of the over 29 million Americans suffering from diabetes are estimated to have nerve damage. People suffering from neuropathy may not feel minor cuts, scrapes, blisters, or pressure sores. If these minor injuries are left untreated, infection may result and lead to ulceration and possibly even amputation.

POOR CIRCULATION

Diabetes often leads to peripheral vascular disease. Poor circulation reduces the amount of oxygen and nutrients supplied to the skin and other tissue, inhibiting the healing of injuries. Poor circulation can also lead to dryness of the skin. Preventing foot complications is more critical for the patient with diabetes, since poor circulation impairs the healing process and can lead to ulcers, infection and other serious foot conditions.

MONITOR YOUR FOOT HEALTH

Start today with a podiatric foot exam

THE IMPORTANCE OF A FOOT EXAMINATION

A Comprehensive Diabetic Foot Exam (CDFE) is performed by a podiatrist to determine your risk of developing serious wounds that could lead to infection and amputation.

Your podiatrist will check your sensory perception (feeling), circulation, and your orthopedic foot structure. The findings of your CDFE will determine your eligibility to receive Medicare coverage for diabetic footwear and inserts through Medicare's Therapeutic Shoe Program.

If the CDFE determines that your feet are at increased risk of ulceration, your podiatrist may prescribe shoes that are covered by a special Medicare program.

YOUR DAILY CARE

Daily observation of the feet is critical. By taking the necessary preventative footcare measures, you can help reduce the risks of serious foot conditions.

FOOT HEALTH CARE TIPS

- Inspect your feet daily for blisters, cuts and scratches. Always check for cracks in the skin between your toes.
- Wear shoes that are designed to protect your feet from injury.
- Wash your feet daily and dry carefully.
- Avoid extreme temperatures. Test water with your hands or elbow before bathing.
- If your feet feel cold at night, wear socks.
- Inspect the insides of your shoes for foreign objects and rough areas.
- Shoes should be fitted by a footcare specialist and be comfortable at the time of purchase.
- See your podiatrist regularly



866.712.STEP(7837)
SAFESTEP.NET

The OHI Family of Brands

